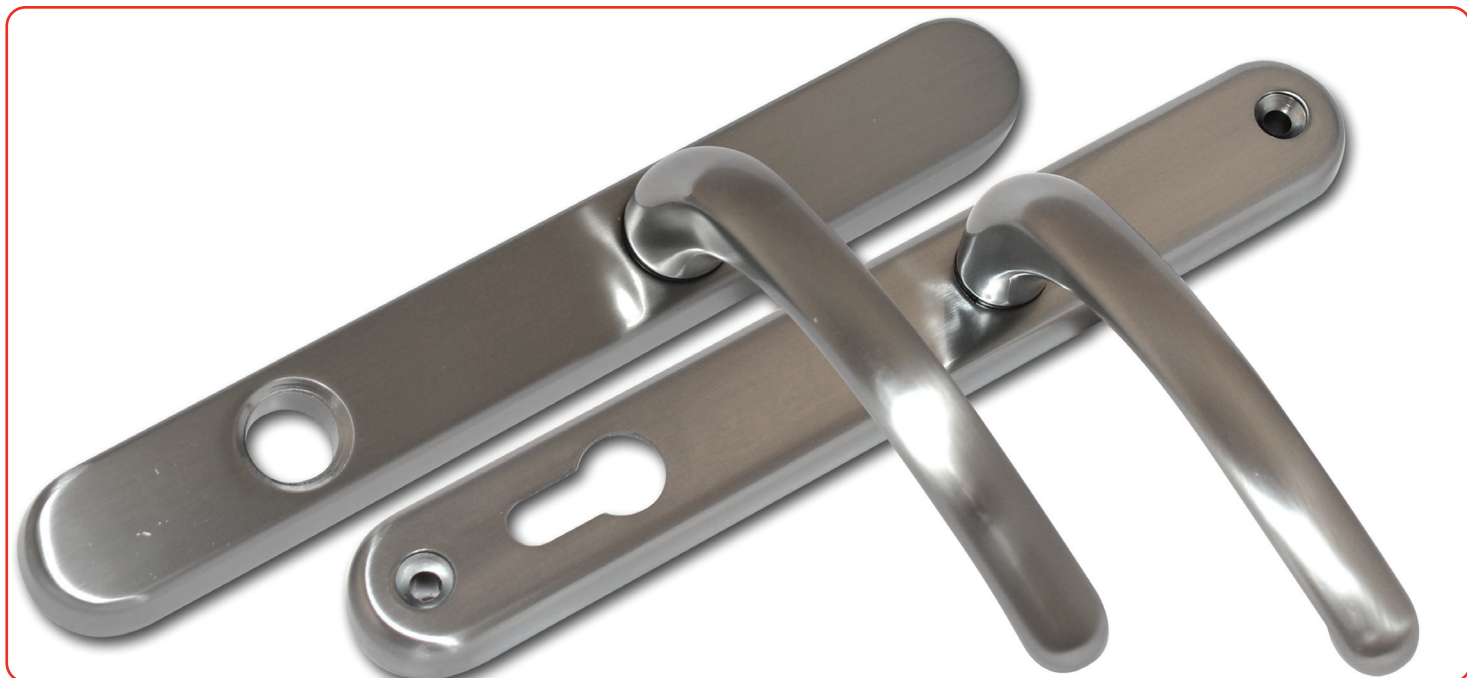


## Berwick Inline Lever Lever



### Features

- **High security door handle compatible with all euro cylinders**  
Achieve PAS24 with a standard anti-bump cylinder (no need for an anti-snap cylinder)
- **Solid extruded aluminium baseplate**  
Acts as a cylinder guard, preventing attack on the cylinder by an intruder
- **Rigid cast steel M6 screw fixings and high tensile steel screws**  
Prevents backplate removal limiting direct attack on lock cylinder
- **Easily retrofitted**  
Can be installed as a security upgrade on existing doors
- **44mm and 70mm versions available**  
Suitable for a wide range of PVCu profiles and Composite door slabs
- **Preparation details are the same as for the Balmoral door handle**  
Interchangeable with Balmoral door handles
- **Tested to the latest version of PAS24:2012**  
Surpasses the latest British Standard for high security door furniture on a new door set (with appropriate anti-bump cylinder)



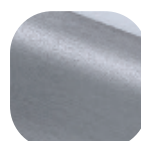
Hardex  
Chrome



Hardex  
Satin



Hardex  
Bronze



Hardex  
Graphite



White



Black

### Berwick Inline Lever Lever

#### Ordering Details

##### Product

Finish	Part No.	
<b>Berwick Inline Lever Lever</b>	<b>44mm</b>	<b>70mm</b>
Hardex Chrome	1R001	1R061
Hardex Satin	-	1R062
Hardex Bronze	1R003	1R063
Hardex Graphite	-	1R068
White	1R000	1R060
Black	8B039	8B042

#### Technical Information

##### Corrosion resistance

Meets the requirements of BS EN 1670:2007 Grade 5 (480 hours)

##### Operation

Endurance tested in excess of 200,000 cycles

##### Performance

Tested to meet the requirements of PAS 24 as part of a compliant door set

#### Material Specification

Handle Grip and Backplate:	High quality Zinc for all finishes
Coatings:	Hardex Chrome, Hardex Satin, Hardex Bronze, Hardex Graphite, White and Black
Spindle / Screws:	Machine screws with colour coordinated heads for handle. 44 mm version (1 x 8 x 110mm spindle; 2 x M6 x 60mm screws. 70mm version (1 x 8mm x 120mm spindle; 2 x M6 x 73mm screws)
Cylinder:	Euro Cylinder, 92mm PZ

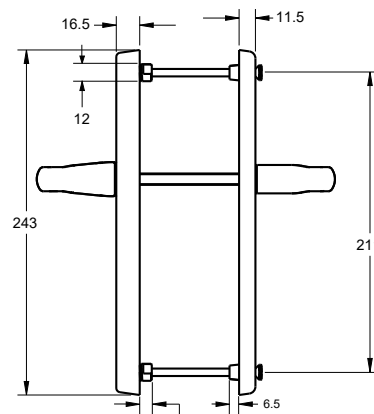
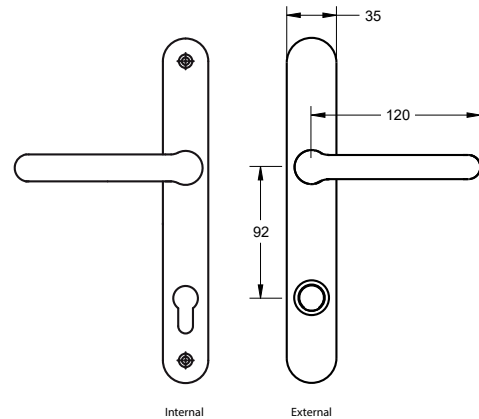
#### Maintenance

For continued protection of the quality finish and appearance, Fab&Fix advise routine cleaning of all our external hardware. Moving parts should also be lightly lubricated at least twice a year. This procedure is particularly essential if products are used within a 25-mile radius of coastal areas or close proximity to building sites or large industrial areas, where more frequent cleaning may be required to prevent the accumulation of corrosive contaminants.

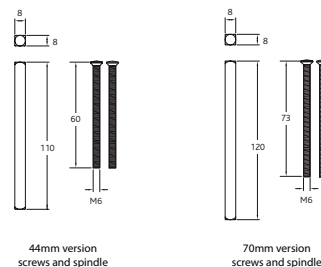
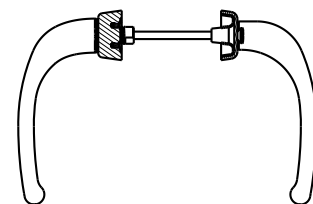
#### Packaging

##### Handles

Individually boxed with screws, spindle and care instructions.  
8 handles in an outer box.



Screw bosses for 44mm version: 8.5  
Screw bosses for 70mm version: 18.5



44mm version  
screws and spindle

70mm version  
screws and spindle

All dimensions are in mm and are nominal.  
Fab&Fix reserves the right to change specification without notice.  
It is the responsibility of the door manufacturer to ensure that the finished product meets any required safety and performance specification.