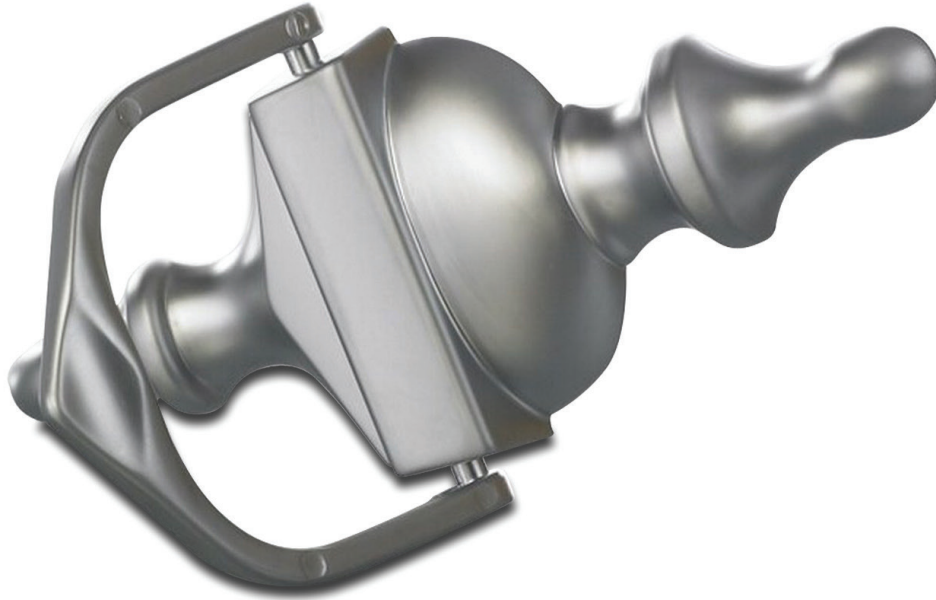


Nu Victorian Urn Large Face Fix



Features

- **Large 8" door knocker**
Striking finish to any door
- **Patented face fixing plate works with all major door materials**
Easy installation; no need to use fixing bolts or to drill through the door (unless using optional viewer)
- **Available with or without door viewer aperture**
Options to neatly conceal the door viewer
- **Wide range of viewers and extensions available**
Cater for all major door depths

Classic door knocker design
Create an elegant and stylish front door



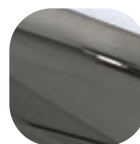
Hardex
Chrome



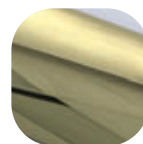
Hardex
Satin



White



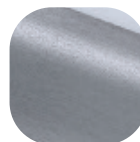
Hardex
Bronze



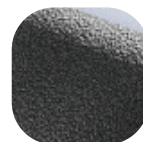
Hardex
Gold



Black



Hardex
Graphite



Antique
Black



Silver

Nu Victorian Urn Large Face Fix

Ordering Details

Product	Part No.	
Nu Victorian Urn Large Face Fix		
Finish	Without Spyhole	With Spyhole
Hardex Chrome	4A204	4A254
Hardex Satin	4A205	4A255
Hardex Bronze	4A206	4A256
Hardex Gold	4A208	4A258
Hardex Graphite	4A211	4A261
Antique Black	4A209	4A259
White	4A200	4A250
Black	4A201	4A251
Silver	4A202	4A252

Technical Information

Corrosion resistance

Meets the requirements of BS EN 1670:2007 Grade 5 (480 hours)

Material Specification

Knocker:	High quality Zinc
Coatings:	Hardex Chrome, Hardex Satin, Hardex Bronze, Hardex Gold, Hardex Graphite, Antique Black, White, Black and Silver.

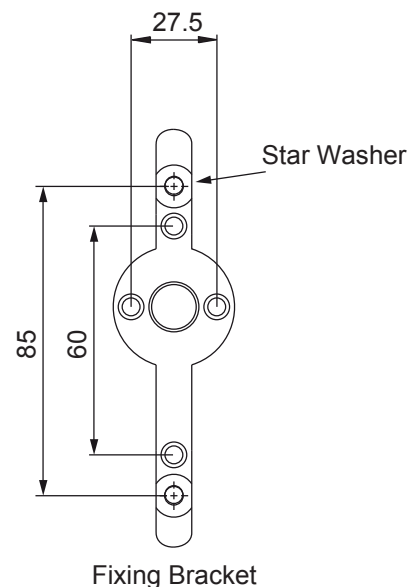
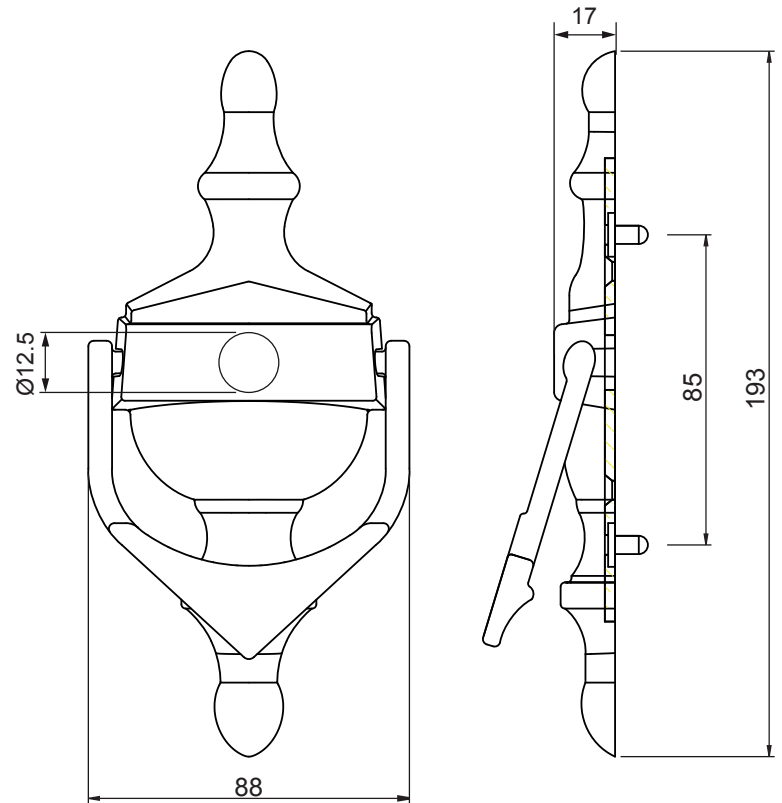
Maintenance

For continued protection of the quality finish and appearance, Fab&Fix advise routine cleaning of all our external hardware. Moving parts should also be lightly lubricated at least twice a year. This procedure is particularly essential if products are used within a 25-mile radius of coastal areas or close proximity to building sites or large industrial areas, where more frequent cleaning may be required to prevent the accumulation of corrosive contaminants.

Packaging

Urn Knocker

Individually boxed with fixings and care instructions.
20 knockers in an outer box.



All dimensions are in mm and are nominal.
Fab&Fix reserves the right to change specification without notice.
It is the responsibility of the door manufacturer to ensure that the finished product meets any required safety and performance specification.