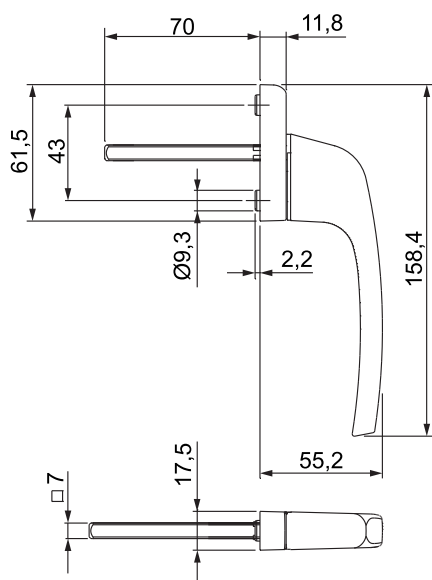
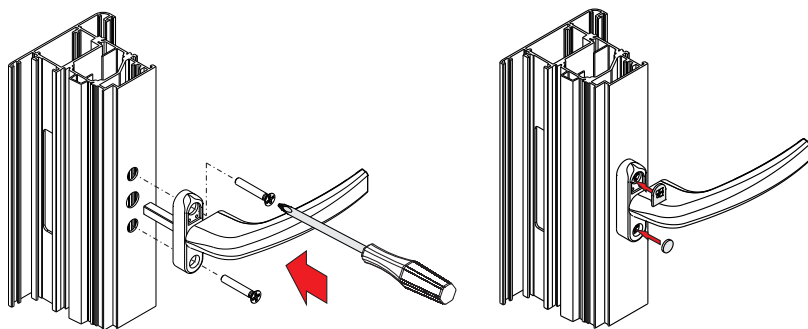


Bas Espag

Features

- Ideal for mechanisms designed to be operated by a 7mm square pin/spindle
- Suitable for outward opening casements windows
- Short backplate width at 17.5mm
- Spindle/square pin length of 70mm for windows where mechanism is a long way from the handle
- Positioner stops rotation at 0 and 90°



All dimensions are in mm and are nominal.
Giesse reserves the right to change specification without notice.
It is the responsibility of the manufacturer to ensure that the finished product meets any required safety and performance specification.



Ordering Details

Product

Bas Handle

Finish

Part No.

Silver	G02491376
White (RAL 9010)	G02491410
Black (RAL 9005)	G02491500

Material Specification

Handle:	Aluminium, Zamak plating
Spring:	Steel
Washer and Pin:	Zinc-plated Steel
Caps:	Polyamide

Maintenance

All handles should be lightly lubricated twice a year and the surface cleaned with a soft damp cloth to remove any dust or grime, taking care not to scratch the surface finish.

Packaging

Handles
5 handles per box