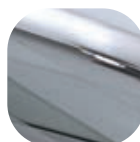


### Pembroke Extended Lever Patio Locking

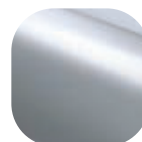


#### Features

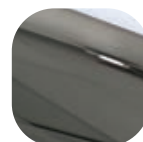
- **Solid die cast Zinc construction**  
Heavyweight handles with sturdy feel
- **Sculpted ergonomic D ring handles**  
Easy to grip, softly sculptured
- **Non handed design**  
D ring handles can easily be reversed
- **Includes screw and spindle pack to suit 40-70mm profiles**  
Everything needed for installation included
- **Colour coordinated screw heads**  
Perfectly matching hardware, even down to the smallest details
- **Integral latch lever**  
Enables keyless secondary locking
- **Supplied with care instructions**  
Helps the homeowner to keep the hardware in optimal condition
- **Each part packaged in a separate chamber, but supplied as a set**  
No scratching of parts during transit



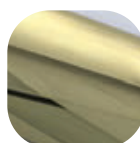
Hardex  
Chrome



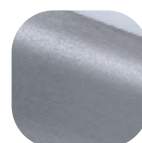
Hardex  
Satin



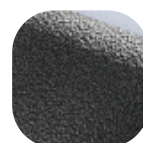
Hardex  
Bronze



Hardex  
Gold



Hardex  
Graphite



Antique  
Black



Black



White

### Pembroke Extended Lever Patio Locking

#### Ordering Details

##### Product

**Pembroke Patio Locking with Extended Lever**

##### Finish

##### Part No.

Hardex Chrome	1M076
Hardex Satin	1M083
Hardex Bronze	1M084
Hardex Gold	1M075
Hardex Graphite	1M073
Antique Black	1M082
White	1M074
Black	1M081

#### Technical Information

##### Corrosion resistance

Meets the requirements of BS EN 1670:2007 Grade 5 (480 hours)

##### Material Specification

Handle Grip and Backplate:	High quality Zinc for all finishes
Coatings:	Hardex Chrome, Hardex Satin, Hardex Bronze, Hardex Gold, Hardex Graphite, Antique Black, White and Black.
Spindle / Screws:	Machine screws with colour coordinated heads for handle. 40mm - 70mm profiles (1 x 7mm x 75mm spindle, 1 x 7mm x 85mm spindle, 1 x 7mm x 95mm spindle; 2 x M5 x 58mm screws, 2x M5 x 70mm screws and 2 x M5 x 80mm screws)
Cylinder:	Euro Cylinder, 92mm PZ

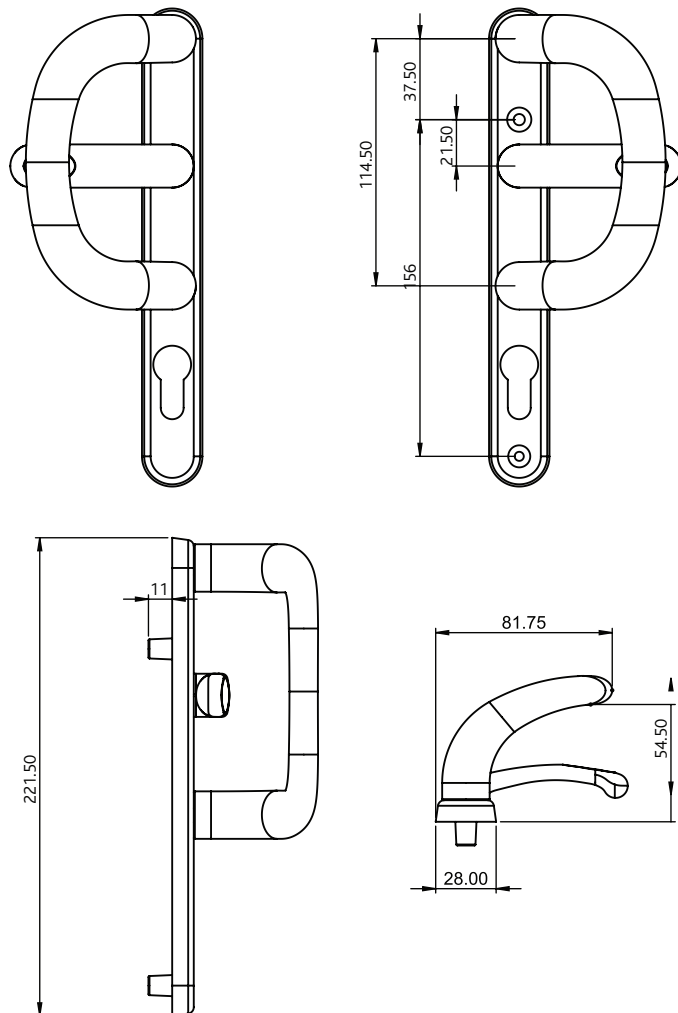
#### Maintenance

For continued protection of the quality finish and appearance, Fab&Fix advise routine cleaning of all our external hardware. Moving parts should also be lightly lubricated at least twice a year. This procedure is particularly essential if products are used within a 25-mile radius of coastal areas or close proximity to building sites or large industrial areas, where more frequent cleaning may be required to prevent the accumulation of corrosive contaminants.

#### Packaging

##### Handles

Individually bagged with screws, spindle and care instructions.  
5 handles in an outer box.



Please note all handles are supplied right handed (as pictured above), viewed from outside. Handles are easily re-handed as required.

All dimensions are in mm and are nominal.

Fab&Fix reserves the right to change specification without notice  
It is the responsibility of the door manufacturer to ensure that the finished product meets any required safety and performance specification.