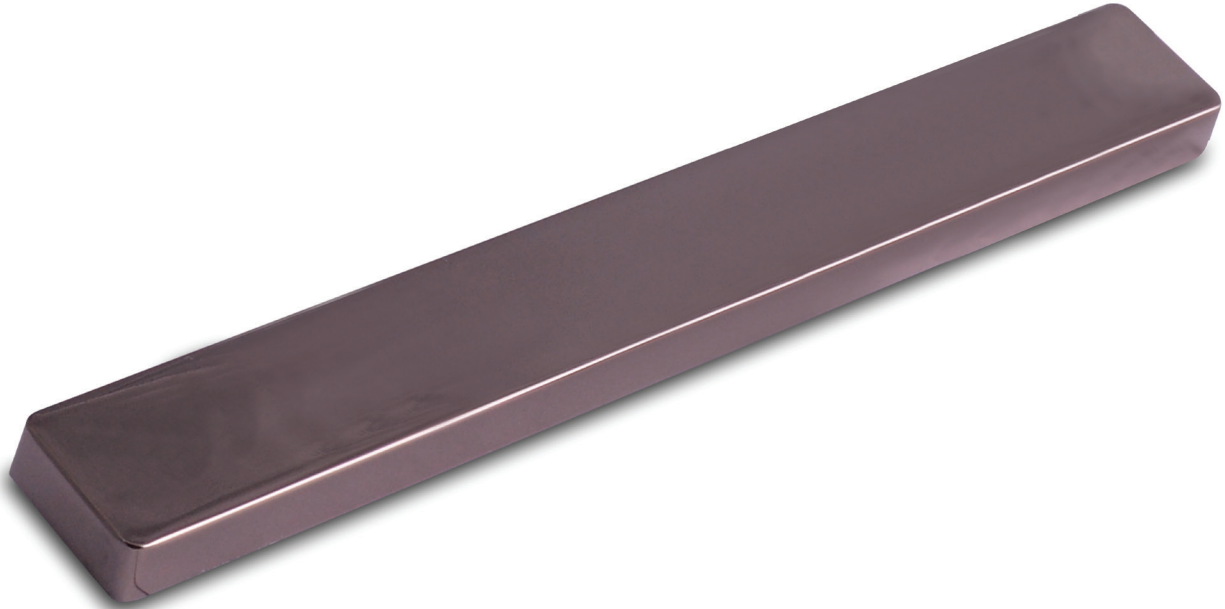


Architectural Exterior Blank Plate

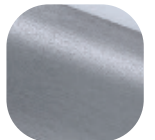


Features

- **Solid die cast construction**
Sturdy feel
- **Flexible purpose component**
Enables all aspects of a job to be completed as a perfectly matching set
- **Baseplate common with all Architectural handles**
Same routing detail regardless of product variant chosen



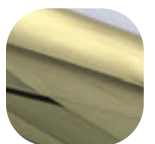
Hardex
Chrome



Hardex
Graphite



Hardex
Bronze



Hardex
Gold

Architectural Exterior Blank Plate

Ordering Details

Product

Architectural Exterior Blank Plate

Finish

Finish	Part No.
Hardex Chrome	1W250
Hardex Bronze	1W251
Hardex Gold	1W252
Hardex Graphite	1W253

Technical Information

Corrosion resistance

Meets the requirements of BS EN 1670:2007 Grade 5 (480 hours)

Material Specification

Backplate: High quality Zinc for all Hardex finishes

Coatings: Hardex Chrome, Hardex Bronze, Hardex Gold and Hardex Graphite

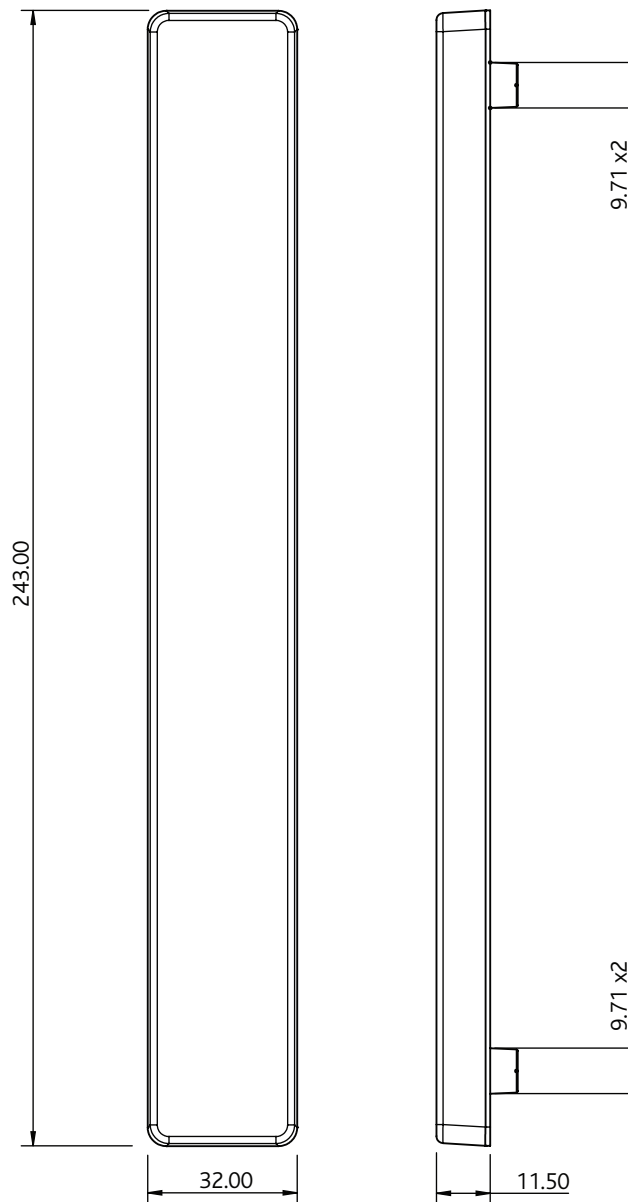
Maintenance

For continued protection of the quality finish and appearance, Fab&Fix advise routine cleaning of all our external hardware. Moving parts should also be lightly lubricated at least twice a year. This procedure is particularly essential if products are used within a 25-mile radius of coastal areas or close proximity to building sites or large industrial areas, where more frequent cleaning may be required to prevent the accumulation of corrosive contaminants.

Packaging

Handles

Individually bagged.
8 handles in an outer box.



All dimensions are in mm and are nominal.
Fab&Fix reserves the right to change specification without notice.
It is the responsibility of the door manufacturer to ensure that the finished product meets any required safety and performance specification.